

Parking Letter – July 2020

Dear Owners,

We are experiencing issues with our parking policy and procedures. The purpose of this letter is to update everyone about the rules and to provide all with a map of the specific parking space for each unit. Please note that the assigned parking spaces are within Phase I and Phase II. *Phase III has a different configuration of garages and driveways and does not require assigned spaces.* Parking is covered in our Rules and Regulations Handbook on page 3. A copy is attached.

The current issues are a result of people parking in another owner's space without their permission. Resolution to the problems include the following:

- Instruct guests or visitors to park in your assigned space or on Bridle Path.
- Arrange for vendors, repair persons etc. to park in your assigned space or on Bridle Path.
- Recognize that each parking area has space for 3 – 8 vehicles and each is allowed **equal distance**.
- Please let your neighbor know if they are using your space.

The Board will make every effort to ensure that snow removal contractors clear all spaces completely.

Attachments:

Parking Rules,
Appendix A

Rules Attachment

Parking

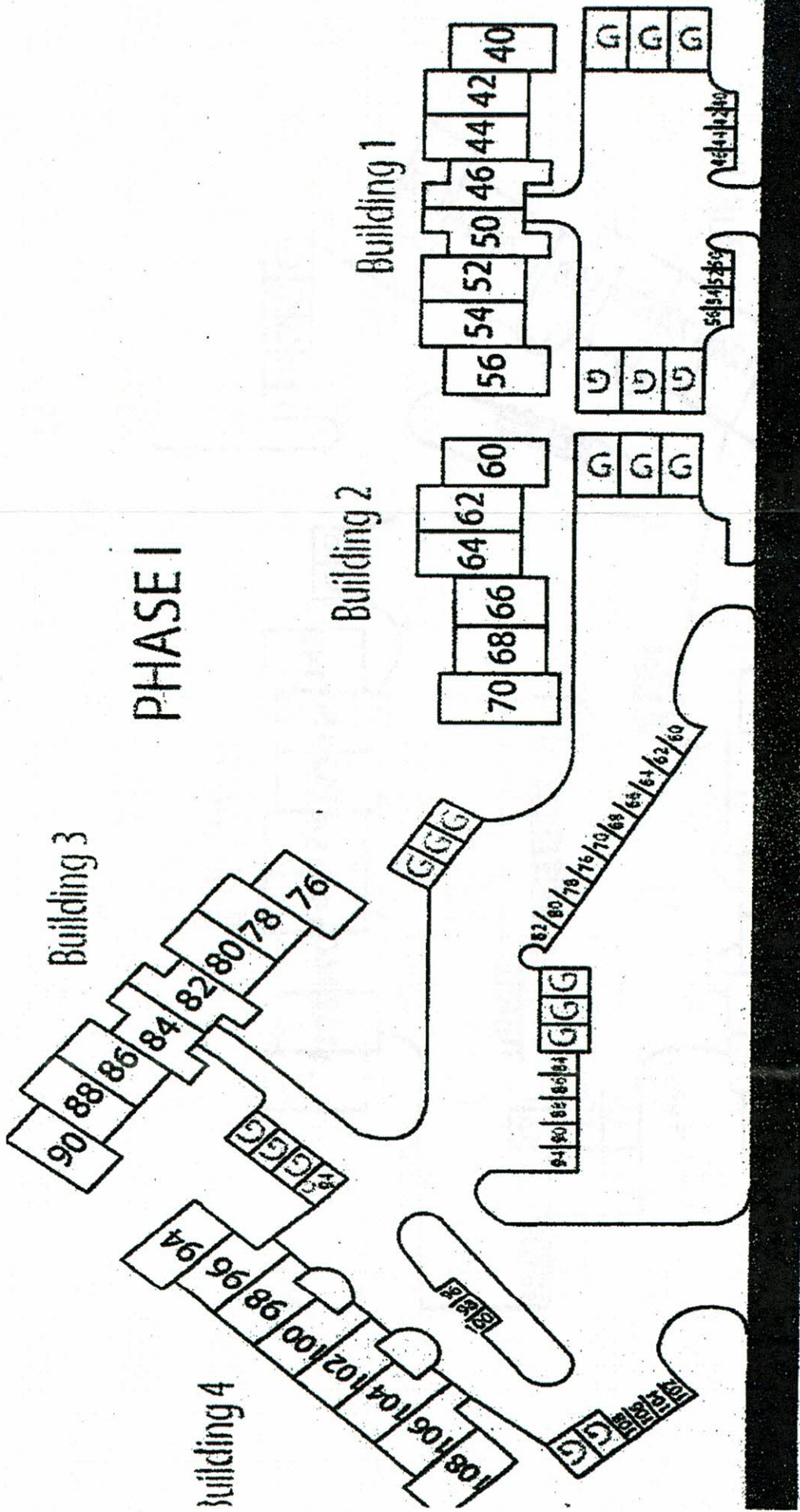
1. Owners may park in their garage and/or designated space (Appendix A). Visitors, caretakers, etc., must park on Bridle Path or a designated owner space. Note: Town of Orchard Park ordinance prohibits overnight street parking between November 1 and April 1.
2. No parking is allowed on MoH roadways, walkways, or grass.
3. The following are prohibited from outside parking and operation at MoH:
 - Vehicles with commercial plates
 - Unlicensed motor vehicles of any type
 - Oversized vehicles
 - Recreational vehicles
 - Mini bikes
 - Snowmobiles
 - Camper bodies
 - All-terrain vehicles
 - Boats or trailers
 - Motorcycles
 - Scooters
 - Other vehicles may be excluded for cause.
4. Owners are responsible for fluid leaks from their personal vehicles on MoH property.

Special Parking Considerations

Those using the clubhouse may temporarily park near the sidewalk beside garage #94 to deliver and pick up goods and assist the handicapped.

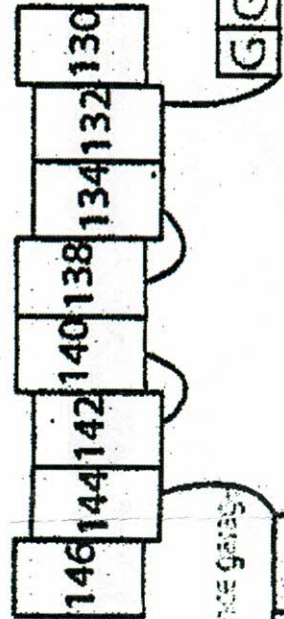
Parking in front of garages is not allowed if it obstructs traffic or pedestrian movement.

PHASE I

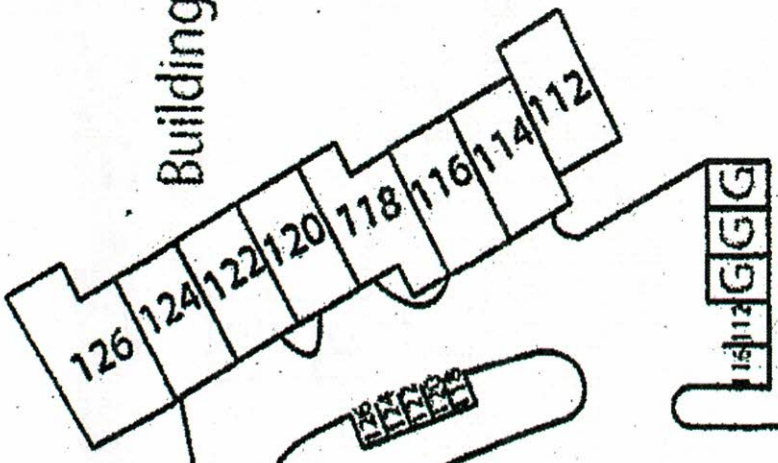


PHASE II

Building 6



Building 5



Building 7

